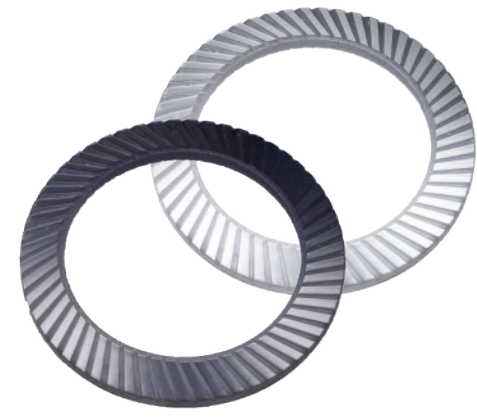


Washers



Serrated Disc Washer for
DIN 912 Bolts

Spring Steel
From 3 mm To 16 mm



DIN 6797 External Tooth
Lock Washer Form A

Spring Steel
From 3 mm To 20 mm



DIN 6797 Internal Tooth
Lock Washer Form J

Spring Steel
From 2,7 mm To 24 mm



DIN 6798 Serrated Lock
Washer with External
Teeth Form A

Spring Steel
From 3 mm To 20 mm



DIN 6798 Serrated Lock
Washer with Internal
Teeth Form J

Spring Steel
From 3 mm To 22 mm



DIN 6798 Serrated Lock
Washer with External
Teeth Form V

Spring Steel
From 3 mm To 16 mm



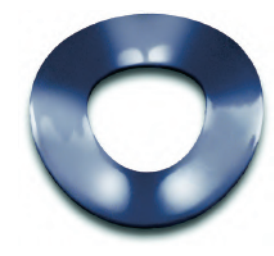
Double-Toothed
Lock Washer

Spring Steel
From 4,5 mm To 12 mm



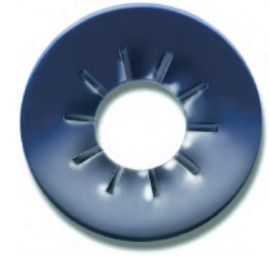
DIN 137 Curved Spring
Washer (Form A)

Spring Steel
From 2 mm To 10 mm



DIN 137 Waver Spring
Washer (Form B)

Spring Steel
From 3 mm To 22 mm



Internal Ribbed
Automotive Washer

Spring Steel
From 4 mm To 10 mm



DIN 6799 E-type Circlip

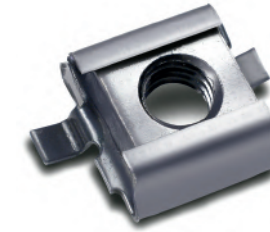
Spring Steel
From 1,2 mm To 24 mm

Nuts



Standard Cage Nut

Cage Stainless Steel
Nut Steel Zinc-plated
From M3 To M10



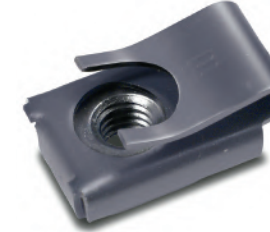
Front-Mounted Cage Nut

Spring Steel
From M4 To M8



Cylindrical Cage Nut

Spring Steel
From M4 To M8



Clip Cage Nut

Spring Steel
From M4 To M8



Cage Nut for Leveling

Spring Steel
From M8 To M10



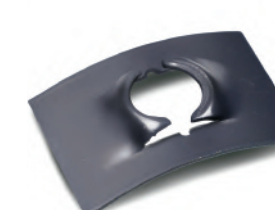
U-Nut for DIN 7970
Threaded Bolts

Spring Steel
Metric thread From M3 To M6
ISO thread From 2,9 mm To 5,5 mm



Chimney (Lug) Nut

Spring Steel
From M5 To M8



Flat Spring Nut

Spring Steel
Metric thread From M3 To M8
ISO thread From 2,9 mm To 6,3 mm

Special Fasteners



Circular Uncapped
Push-on Fastener
for Shafts

Spring Steel
From Ø 2 To Ø 14



Circular Push-on Fastener

Spring Steel
Ø 4,8



Compression Ring

Spring Steel
From Ø 6,4 To Ø 14,2



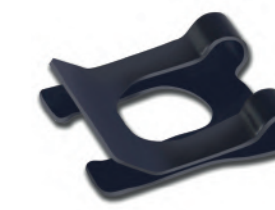
Flat Nut for Shafts

Spring Steel
From Ø 1,5 To Ø 8



Shaft Clip

Spring Steel
From Ø 6 To Ø 10



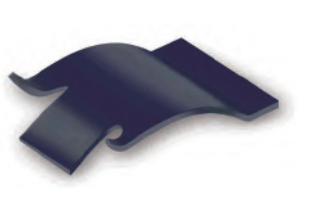
Safety Clip

Spring Steel
From Ø 5 To Ø 14



Spring Steel Panel Latch

Spring Steel
Form A, B and C



Button Clip

Steel
Button 1, 2 and 3

Spring Pins



DIN 1481 Heavy-Duty
Spring Pin

Spring Steel
From Ø 1,5x4 To Ø 12x120

Circlips



DIN 472-I Internal Circlip

Spring Steel
From Ø 8 To Ø 200



DIN 471-E External Circlip

Spring Steel
From Ø 3 To Ø 200

Excellence in Fastener Manufacture

THE MIKALOR GROUP (Mikalor Tools & Engineering, Mikalor Fastening Solutions, Mikalor Hose Clamps and Damesa) ensures that each of the member companies specializes in production and services within the Group, creating synergies and a clear competitive advantage compared to our competitors.

STANDARD PARTS Mikalor Fastening Solutions, in Manresa (Barcelona) is specialized in the manufacture of all of our standard metal fasteners, including DIN 1481 spring pins, washers, cage nuts and so on. Many of our spring-steel U-nuts, chimney nuts and compression rings in particular are increasingly sought after as they become harder and harder to source. Our low MOQ's (one box quantity of any standard part) make us an excellent option for spring-steel fasteners.



SPECIALS At Mikalor Fastening Solutions we also manufacture special metal fasteners according to the technical specifications of industry or automotive R&D departments. We control the complete manufacturing process from beginning to end. Based on a sample or drawing, we can design and manufacture a machine tool for punching, stamping, bending, threading etc. and then manufacture the finished article. We also manufacture machine tools for third parties.

Fasteners

MIKALOR
www.mikalor.com



damesa
damesa@damesa.com
(+34) 93 72 99 61

MIKALOR